



# Abuse and Neglect Policy and procedures

Final 1.0  
Accommodation Policy and Development Directorate  
Ageing, Disability and Home Care, Department of Human Services, NSW  
May 2007, Amended September 2010



**Human Services**  
Ageing, Disability & Home Care

Document approval

The document ***Abuse and Neglect Policy*** has been endorsed and approved by:

---

Chief Executive, ADHC

Deputy Director-General, ADHC

17 May 2007

22 May 2007

Document version control

Document name: Abuse and Neglect policy and procedures

Version: 1.0

Document status: Final

File name: Abuse and Neglect policy and procedures

Authoring unit: Client Support Policy Unit

Date: May 2007, Amended September 2010

Distribution: **All ADHC operated services and funded non-government providers**

## TABLE OF CONTENTS

	<b>GLOSSARY .....</b>	<b>4</b>
<b>1</b>	<b>POLICY .....</b>	<b>6</b>
	1.1 Background .....	6
	1.2 Preventing abuse .....	6
	1.3 Purpose .....	6
	1.4 Target group.....	6
	1.5 Advocacy and client support .....	7
	1.6 Types of abuse addressed in this policy .....	8
	1.7 Legislative context.....	9
<b>2</b>	<b>PRINCIPLES.....</b>	<b>11</b>
	2.1 Preventing abuse .....	11
	2.2 Identifying abuse .....	11
	2.3 Reporting abuse.....	11
	2.4 Responding to a report of abuse .....	11
	2.5 Responding to abuse of a client by a member of staff .....	12
	2.6 Responding to abuse of a client by another client.....	12
	2.7 Privacy and confidentiality .....	12
	2.8 Responsibilities .....	12
<b>3</b>	<b>REPORTING ABUSE TO NSW POLICE.....</b>	<b>13</b>
	3.1 EMERGENCY – DIAL 000 .....	13
	3.2 Reporting to NSW Police.....	13
	3.3 Exceptions.....	13
<b>4</b>	<b>RESPONSE PROCEDURES FOR ADHC OPERATED SERVICES.....</b>	<b>14</b>
	4.1 Emergency response .....	14
	4.2 Protecting evidence for NSW Police .....	14
	4.3 The line manager’s role.....	15
	4.4 Abuse by a member of staff .....	15
	4.5 Abuse by another client.....	16
	4.6 Financial abuse .....	17
	4.7 Past incidents of abuse .....	17
	4.8 Communication .....	17
	4.9 Support for clients .....	18
	4.10 Support for staff .....	18
	4.11 Privacy and confidentiality .....	18
	4.12 Record keeping .....	19
	4.13 Managing risk .....	19
	4.14 Regional reporting .....	19
<b>5</b>	<b>APPENDICES .....</b>	<b>23</b>
	5.1 PREVENTION AND EARLY INTERVENTION.....	23
	5.2 TYPES OF ABUSE .....	25
	5.3 RECOGNISING SIGNS THAT MAY BE INDICATORS OF ABUSE ....	29
	5.4 USEFUL CONTACTS .....	31
	5.5 POTENTIAL SOURCES OF ABUSE .....	37

## GLOSSARY

### **Abuse**

Abuse as it is used throughout this policy refers to sexual assault, physical, emotional, financial and systemic abuse, domestic violence, constraints and restrictive practices, and to neglect.

### **Action plan**

A plan developed by a manager that describes strategies to identify and assess risks, and the process employed to eliminate or manage risk. Measures include:

- Reviewing the practice used prior to and during the incident in line with the unit and client routines, and with reference to client management plans;
- Reviewing client management plans to prevent further incidents or to minimise their effects on clients' lifestyle and wellbeing;
- Applying a risk management approach to work practices (ADHC staff can refer to the *OHS Risk Management Policy, 2004*).

### **Advocate**

A person who promotes, supports and represents the rights and interests of another person. An advocate is often involved in acting, speaking or responding on behalf of another person. Staff cannot be advocates for people with a disability who are clients of ADHC operated or funded non-government services.

### **Assault**

Assault, as described in the *Crimes Act 1900*, is against the law. For the purpose of this policy assault is any attempt or threatened attempt to cause unwanted immediate physical contact or bodily harm that puts the victim in fear of such harm or contact.

### **Client**

The client is a person with a disability who lives or participates in an ADHC operated or funded non-government service.

### **Client Risk Profile**

The *Client Risk Profile* is a simple risk assessment tool for staff working directly with clients. It is used to characterise risks by providing quick reference material for individualised risk management strategies. It is designed for use throughout ADHC operated and funded non-government services.

The *Client Risk Profile* integrates ADHC policies with Occupational Health and Safety responsibilities. When implemented correctly, within the broader framework of client risk management, the *Client Risk Profile* provides an effective and uniform risk alert system that remains sensitive to the individual and changing needs of a client. The *Client Risk Profile* sits within the existing *Individual Planning* process.

### **Duty of care**

The requirement a disability service has to take reasonable care to avoid foreseeable harm to a client.

### **Guardian<sup>1</sup>**

A substitute decision-maker with authority to make personal or lifestyle decisions about the person under guardianship. A guardian is appointed for a specified period

---

<sup>1</sup> Guardianship Tribunal at <http://www.gt.nsw.gov.au/questions/definitions.cfm>

of time and is given specific functions (e.g. where the person lives, or services and medical treatment the person receives). A guardian may be appointed who is a family member or friend provided the criteria set out in the legislation are satisfied. Otherwise, the Guardianship Tribunal will appoint the Public Guardian.

### **Manager or line manager**

For reporting purposes in this policy the manager or line manager is the next person in line to receive a report of abuse or to take action on an allegation of abuse.

### **Person responsible<sup>2</sup>**

Someone who has the authority to consent to treatment for an adult who is unable to give a valid consent to their own medical or dental treatment. Sometimes, a person is unable to make the decision or does not understand what the treatment is about or its effects. In these cases, the person responsible can give substitute consent on behalf of the other person.

A 'person responsible', in order of hierarchy, is:

1. a guardian (including an enduring guardian) who has the function of consenting to medical, dental and health care treatments or, if there is no guardian,
2. the most recent spouse or de facto spouse (including same sex partner) with whom the person has a close, continuing relationship or, if there is no spouse or de facto spouse,
3. an unpaid carer who is now providing care to the person or arranged/provided this support before the person entered residential care or, if there is no carer,
4. a relative or friend who has a close personal relationship with the person.

### **Support person**

In the context of this policy, a client who has been abused may be required to talk to the police, a sexual assault worker or representative of a legal or victim's service, and will need support at these times. The support person does not have the same function as the 'person responsible' and will not make decisions for the client. The person may be a member of staff who is known and trusted by the client. The support person may also be from an advocacy service.

---

<sup>2</sup> Guardianship Tribunal at [http://www.gt.nsw.gov.au/information/doc\\_14\\_substitute\\_consent.htm](http://www.gt.nsw.gov.au/information/doc_14_substitute_consent.htm)

# 1 POLICY

## 1.1 Background

The provisions of the *NSW Disability Services Act 1993* and supporting Standards clearly outline the obligations that service providers have to ensure the rights of people with a disability are met as equal members of society.

Those rights include their entitlement to feel safe, and to live in an environment where they are protected from assault, neglect, exploitation or any other form of abuse. Studies on the frequency of abuse towards people with a disability show that they are much more likely to experience abuse than the rest of the population (Howe, 2000; Blyth, 2002)<sup>3</sup>. A range of factors contribute to the higher levels of abuse experienced by people with a disability, for example, low mobility, limited communication skills, high dependence on non-family members for personal care, and the use of shared accommodation services.

## 1.2 Preventing abuse

Ageing, Disability and Home Care, Department of Human Services, NSW (ADHC) acknowledges that prevention is the best protection from abuse. Service providers have a duty of care to implement prevention strategies that include suitable recruitment screening processes and protocols for identifying the risk indicators for abuse. Prevention strategies should provide for the employment of skilled staff who respect the rights of clients, who are aware of current policies and legislation pertaining to abuse, and who will support clients and their families or guardians to access complaint mechanisms and raise any concerns they have about services.

**Refer to Appendix 1 for a summary guide to the prevention of abuse and early intervention strategies.**

## 1.3 Purpose

If for any reason prevention strategies fail to afford protection, the *Abuse and Neglect Policy* aims to provide paid or unpaid workers of ADHC operated and funded services, with the means to respond quickly and appropriately to allegations of abuse.

## 1.4 Target group

All paid and unpaid workers in ADHC operated and funded non-government services who have contact with adult people with a disability.

### 1.4.1 The clients

A client is any adult person with a disability who lives or participates in an ADHC operated or funded non-government service. The disability may make it difficult for the person to move independently, communicate or perform activities of daily living,

---

<sup>3</sup> In *Violence against women with disabilities – An overview of the literature*, Keran Howe, 2000. Women With Disabilities Australia (WWDA).  
*Myalla. Responding to people with intellectual disabilities who have been sexually assaulted*. Northern Sydney Health Sexual Assault Service, 2002.

without assistance. The disability can be the result of an intellectual or physical impairment, or of an acquired injury.

The abuse or neglect of a child (0-15 years) or a young person (16-18 years) must be reported immediately to the Child Protection Helpline on 132 111. The ADHC *Child protection policy and reporting procedures for ADHC and ADHC-funded services*, 2004, describes the circumstances and procedures that staff must be aware of in relation to the abuse or neglect of children and young people.

#### 1.4.2 The services

The organisational structure of a service will determine the reporting procedures that are followed in response to an allegation of abuse.

The following ADHC operated services have designated reporting lines in accordance with the organisation's structure that must be adhered to following an allegation of abuse:

- Accommodation support services (in-home support, group homes and large residential centres);
- Respite services;
- Community Access programs, including day programs and community participation; and
- Community Support Teams.

Organisations that provide the following ADHC funded non-government services are required under Standard 10 (*Standards in Action*) to have reporting procedures in place that must be followed on receiving an allegation of abuse:

- Accommodation support services (in-home support, group homes and large residential centres);
- Flexible and centre based respite services; and
- Community programs, including Transition to Work, therapy and day programs.

### 1.5 Advocacy and client support

Clients of ADHC operated and funded non-government services have different types of support networks. Clients have families who are closely involved in their lives or may be reliant on legally appointed guardians to make particular decisions for them. Other clients are represented by advocacy services and for some clients these advocates are their only support network.

An advocate must represent the best interests of a client, and in the absence of a family member or any other person having a close relationship with the client, may be the contact person for issues relating to the client. Other clients may be the passive recipients of informal advocacy support, and in this case, service providers will have to consider what information about a client is appropriate for sharing with an informal advocate.

The issue of information sharing arises in the *Abuse and Neglect Policy* and a balance is required between:

- ensuring that people who have an important relationship with the client are informed when there is an allegation of abuse involving that client, and
- obeying the law as it applies to upholding individuals' rights to privacy.

## **1.6 Types of abuse addressed in this policy**

*Abuse* is used throughout the policy to describe behaviour or actions that are intended to cause harm to a person with a disability. The types of abuse referred to in this policy are defined below. (Examples of each are provided in **Appendix 2**).

### *1.6.1 Domestic violence*

Violence, abuse and intimidation perpetrated by one person against another in a personal, intimate relationship. Domestic violence occurs between two people where one has power over the other causing fear, physical and/or psychological harm.

### *1.6.2 Neglect*

Neglect is a failure to provide the basic physical and emotional necessities of life. It can be wilful denial of medication, dental or medical care, therapeutic devices or other physical assistance to a person who requires it because of age, health or disability. It can also be a failure to provide adequate shelter, clothing, food, protection, supervision and nurturance or stimulation needed for social, intellectual and emotional growth or well being. It can be the placement of persons at undue risk through unsafe environments or practices thereby exposing them to the danger of physical, mental or emotional harm.

### *1.6.3 Physical abuse*

Physical abuse is assault, non-accidental injury or physical harm to a person by any other person. It includes but is not limited to inflicting pain or any unpleasant sensation, and causing harm or injuries.

### *1.6.4 Restraints and restricted practices*

Restraining or isolating an adult for reasons other than medical necessity or in the absence of a less restrictive alternative to prevent self-harm. This may include the use of chemical or physical means or the denial of basic human rights or choices. These practices are not considered to be abuse if they are applied under a restricted practice authorisation.

### *1.6.5 Sexual assault*

It includes any sexual contact between an adult and child 16 years of age and younger. Any non-consensual sexual activity with an adult who is threatened, coerced or forced to engage in sexual behaviour is sexual assault. It includes language or exploitative behaviour and can take the form of rape, indecent assault, sexual harassment or sexual interference in any form.

#### 1.6.6 *Emotional abuse*

Includes verbal assaults, threats of maltreatment, harassment, humiliation or intimidation, or failure to interact with a person or to acknowledge that person's existence. This may also include denying cultural or religious needs and preferences.

#### 1.6.7 *Financial abuse*<sup>4</sup>

The improper use of another person's property or assets, or the use or withholding of another person's resources by someone with whom there is a relationship implying trust.

#### 1.6.8 *Systems abuse*<sup>5</sup>

In its simplest form, systems abuse occurs when the needs of people with a disability who are in receipt of a service are not recognised, and essential services are not provided or are inadequate, inappropriate or poorly coordinated. The impact on individuals can include neglect or abuse resulting from poor practice, exclusion from community life and the loss of basic human rights.

**Other terms used in this policy are defined in the Glossary at the beginning of the document.**

### 1.7 **Legislative context**

#### *Community Services (Complaints, Reviews and Monitoring) Act 1993*

"An Act to provide for complaints, reviews and monitoring in relation to the provision of community services; to provide for Official Community Visitors and their functions; to confer and impose functions on the Ombudsman, to confer and impose functions on the Administrative Decisions Tribunal; and for other purposes".

#### *NSW Crimes (Forensic Procedures) Act 2000*

"An Act to make provision with respect to the powers to carry out forensic procedures on certain persons and to make provision with respect to a DNA database system; to make a related amendment to the *Justices Act 1902* and consequential amendments to the *Crimes Act 1900*; and for other purposes".

#### *Criminal Procedures Act 1986*

"An Act relating to the prosecution of indictable offences, the listing of committal proceedings and proceedings for summary offences and the giving of certain indemnities and undertakings; and for other purposes".

#### *Independent Commission Against Corruption Act 1988*

"An Act to constitute the Independent Commission Against Corruption and to define its functions. The principal objects of this Act are:

(a) to promote the integrity and accountability of public administration by constituting an Independent Commission Against Corruption as an independent and accountable body,

---

<sup>4</sup> From *Policy framework for the care and protection of vulnerable people with disabilities*, Disability Services Commission, Western Australia, 2005.

<sup>5</sup> From *Abuse Prevention Strategies in Specialist Disability Services*, NDA 2002.

- (b) to investigate, expose and prevent corruption involving or affecting public authorities and public officials,
- (c) to educate public authorities, public officials and members of the public about corruption and its detrimental effects on public administration and on the community, and
- (d) to confer on the Commission special powers to inquire into allegations of corruption.”

*NSW Crimes Act 1900 and Section 316*

The section relates to “concealing serious indictable offence”.

*Law Enforcement (Powers and Responsibilities) Act, 2002*

“An Act to consolidate and restate the law relating to police and other law enforcement officers’ powers and responsibilities; to set out the safeguards applicable in respect of persons being investigated for offences; to repeal certain Acts and to consequentially amend other Acts; and for other purposes”.

*NSW Disability Services Act 1993 and supporting Standards*

“An Act relating to the provision of disability services for persons with disabilities”.

*The Home Care Service Act, 1988*

“An Act relating to the constitution of the Home Care Service of New South Wales”.

*Mental Health (Criminal Procedure) Act, 1990*

“An Act with respect to criminal proceedings involving persons affected by mental illness and other mental conditions”.

*Privacy and Personal Information Protection Act, 1998*

An Act to provide for the protection of personal information, and for the protection of the privacy of individuals generally; to provide for the appointment of a Privacy Commissioner; to repeal the *Privacy Committee Act 1975*; and for other purposes.

*Protected Disclosures Act, 1994*

An Act to provide protection for public officials disclosing corrupt conduct, maladministration and waste in the public sector; and for related purposes.

*Victims Rights Act 1996*

“An Act to establish a charter of rights for victims of crime; to amend the *Criminal Procedure Act 1986* with respect to victim impact statements; and for other purposes”.

*Victims Support and Rehabilitation Act, 1996*

“An Act to provide support and rehabilitation for victims of violence; and to repeal the *Victims Compensation Act 1987*”.

*United Nations Rights of the Disabled Person 1975*

## 2 PRINCIPLES

The following Principles are to be observed by all ADHC operated and funded non-government services in response to an allegation of adult client abuse.

ADHC funded non-government services must ensure that the intent of the Principles is reflected in their operational procedures.

### 2.1 Preventing abuse

Service providers take reasonable steps to ensure that all paid and unpaid workers understand and perform their roles in preventing abuse of clients by any person.

**Appendix 1** provides some prevention strategies that may be employed by service providers.

### 2.2 Identifying abuse

Paid and unpaid workers working with people with a disability understand the behaviours or actions that constitute abuse. **Appendix 2** describes eight types of abuse, and examples of behaviours that on their own or together could be abusive.

Paid and unpaid workers working with people with a disability are able to recognise signs that may be indicators of abuse. **Appendix 3** describes the behaviours and physical signs that a client may show in response to abuse.

Service providers recognise that people with challenging behaviour, and people who are non-verbal or who experience communication difficulties, may be more vulnerable to abuse.

### 2.3 Reporting abuse

The procedures for reporting allegations or suspicions of client abuse are clearly articulated and include the responsibilities of all parties involved in the process.

The culture of the organisation or service will encourage and support any person who has witnessed abuse of a client or clients, or suspects that abuse has occurred, to make a report of abuse and be confident of doing so without fear of retaliation and in a supportive environment.

All paid and unpaid workers are aware of their responsibility to report allegations of abuse in accordance with the service provider's documented procedures. **Appendix 1** contains strategies for ensuring that all workers are aware of their responsibilities towards clients.

### 2.4 Responding to a report of abuse

Response is prompt, appropriate and in accordance with clearly documented procedures. The response should include appropriate reporting to the NSW Police, and the provision of medical care, including transfer to hospital by an ambulance and referral to a Sexual Assault Service if the assault is of a sexual nature.

When the victim is unable to give consent, the family, guardian or other support person are notified of the incident as soon as possible.

If it is appropriate and the victim has given consent, the family or guardian of the victim, or other support person, are informed of the allegation of abuse as soon as possible after the report is made.

All aspects of the incident are documented in accurate written accounts, including any follow up actions.

## **2.5 Responding to abuse of a client by a member of staff**

All incidents and allegations of abuse are documented and reported to a manager.

All reasonable steps are taken to ensure that the client is protected from further harm by preventing contact with the alleged offender.

The rights of the alleged offender and responsibilities of the employer are adhered to in accordance with the appropriate legislation.

## **2.6 Responding to abuse of a client by another client**

Services manage the interactions between clients to avoid incidents of abuse, and record in behaviour management plans the triggers that may cause one client to harm another.

If behaviour management strategies fail to prevent the abuse of one client by another, clients are protected from further harm.

A review of the circumstances pertaining to the event is conducted within a reasonable timeframe.

Any behaviour management strategies implemented by the service are safe, respectful of the person and non-abusive.

When the victim and offender are both clients they are equally entitled to support during the response process by an independent person.

## **2.7 Privacy and confidentiality**

Access to records is restricted to those who are directly involved in reporting and responding to the incident to ensure that individuals' rights to privacy are upheld.

A key staff member is appointed to be the sole contact for the family, guardian or other support person in providing information relating to the incident and any subsequent investigations.

## **2.8 Responsibilities**

The service's response process does not compromise any investigation by the NSW Police or other external agencies.

Staff and witnesses cooperate with the investigations of NSW Police and other agencies as required.

Clients are assisted by an independent support person during their contact with the NSW Police and other agencies.

The roles and responsibilities of management, staff and volunteers in responding to a report or allegation of abuse are documented and clearly defined.

## 3 REPORTING ABUSE TO NSW POLICE

### 3.1 EMERGENCY – DIAL 000

When a client or another person has been assaulted or is in immediate danger of an assault the **NSW Police** must be called (see **3.3** below for exceptions).

If a client or another person sustains an injury as the result of an assault the **NSW Ambulance Service** must be called.

### 3.2 Reporting to NSW Police

#### 3.2.1 *Sexual assault*

Sexual assault of a client is a serious offence and must be reported to the NSW Police (see **3.3** below for exceptions).

#### 3.2.2 *Physical assault*

Any other physical assault of a client must be reported to the NSW Police (see **3.3** below for exceptions).

#### 3.2.3 *Other assault*

A report of **domestic violence**, or **abuse** by **neglect** and **restricted practices**, and **emotional**, **financial** and **systems abuse**, must be reported to a manager as soon as possible and may be reported to the NSW Police.

### 3.3 Exceptions

A report to the NSW Police about an assault may **not** be required if any of the following conditions exist:

- an incident that would usually be classed as assault, is caused by a person with an intellectual disability who lacks understanding of the behaviour; and
- physical contacts occurring between clients (e.g. pushing or striking) that are appropriate for resolution using behaviour management strategies, and are reported internally.

**If in doubt about reporting abuse the NSW Police may be contacted for advice.**

## 4 RESPONSE PROCEDURES FOR ADHC OPERATED SERVICES

A report of abuse may be received from:

- **a person with a disability** using verbal or written communication or any other communication system;
- **another client, member of staff** or any other person, who may witness abuse of a client and make a report; or
- **a member of staff** upon observing one or more indicators of abuse (**Appendix 3**) suspects that a client or clients have been or are being abused.

The following procedures must be followed where abuse of any sort towards a client is known or suspected. To assist staff, the procedures described below for responding to sexual and physical assault, and abuse or neglect, are also depicted in flow charts (Flow charts 1, 2 and 3 following this section). The one-page flow charts may be copied and displayed where staff can access them quickly and easily if necessary.

### 4.1 Emergency response

- 4.1.1 Staff who are present at the time of an assault should take appropriate measures to maintain their own safety, and that of other clients and staff.
- 4.1.2 Staff at the scene must ensure that the client (the victim) is protected from any further harm or contact with the person who is the source of abuse (the offender).
- 4.1.3 Staff at the scene must notify the doctor or ambulance if the client or any other person is injured.
- 4.1.4 Staff at the scene must **immediately** advise the line manager, or 'on call' line manager of the incident.
- 4.1.5 Staff at the scene or the line manager must contact the NSW Police if a client has been physically or sexually assaulted (**Section 3**) or dies as the result of an assault.
- 4.1.6 Staff at the scene or the line manager must also contact the local Sexual Assault Service if a client has been sexually assaulted (**Appendix 4**).

### 4.2 Protecting evidence for NSW Police

- 4.2.1 Staff at the scene must use their best endeavours to ensure that any evidence the NSW Police may require in their investigation is not disturbed.

- 4.2.2 Evidence may be lost if a victim of sexual assault bathes soon after the assault. Try and delay bathing until the NSW Police arrive if the victim is not distressed by the delay.
- 4.2.3 If possible, preserve the victim's clothing as evidence following an assault of any type.
- 4.2.4 If possible, isolate the area where the incident occurred and do not allow anyone to enter the area until the NSW Police arrive.
- 4.2.5 Apart from ascertaining their physical condition and state of mind, avoid questioning clients about the incident to reduce contamination of their recall and confusion about the events.

### **4.3 The line manager's role**

- 4.3.1 The line manager should ensure that all emergency procedures have been followed and the appropriate emergency services have been called.
- 4.3.2 The line manager must ensure that the victim's wishes are followed in relation to advising family, guardian or other support person about the incident, where the victim is capable of making this known. When the victim is not capable then the line manager should make sure the appropriate person is notified of the incident **as soon as possible** and **within 12 hours** of the report being made.
- 4.3.3 The line manager is responsible for ensuring that documentation of the incident is completed and reports are forwarded to the appropriate levels of management.

### **4.4 Abuse by a member of staff**

- 4.4.1 If it is witnessed or suspected that a member of staff has abused a client or clients, the line manager or 'on call' line manager must be informed **immediately**.
- 4.4.2 If it is suspected that the line manager is involved in the abuse the matter must be reported to the next level manager **immediately**.
- 4.4.3 Where management reasonably believes that a member of staff is the source of abuse of a client the matter must be referred to the NSW Police.
- 4.4.4 Each ADHC Region is responsible for adopting a protocol for making referrals to the NSW Police and for managing the referral process locally.

- 4.4.5 Any cases of suspected abuse by a member of staff must be reported to the ADHC Ethics and Professional Standards Unit (EPSU)<sup>6</sup>.
- 4.4.6 The EPSU will offer advice and assistance to the Region in the management of this matter.
- 4.4.7 A member of staff who is reasonably suspected of abusing a client must not be permitted to have any unsupervised contact with the client, and may be immediately transferred to alternative duties following the allegation and until the matter is resolved.
- 4.4.8 Any allegations of abuse by a member of staff towards a client will be the subject of internal investigations within ADHC, and by the NSW Police.
- 4.4.9 If it is found that a member of staff has abused a client, the matter may warrant dismissal of the staff member by ADHC, as well as any action taken by the NSW Police.
- 4.4.10 If a staff member accompanies the offender who is another staff member to the police station to provide support, the staff member must not give an opinion about the offender or the alleged incident or give the offender legal advice. The staff member should be replaced by an independent support person or a legal adviser as soon as possible.

#### **4.5 Abuse by another client**

- 4.5.1 When one client is the suspected or known source of abuse towards another client, staff must ensure that the rights of both clients are observed during the response and reporting processes.
- 4.5.2 Any decisions made in relation to managing the incident must be fully documented for future reference, along with the reason for the decision and the name and contact details of the person making the decision.
- 4.5.3 The line manager must ensure that the wishes of the victim and the offender are followed in relation to advising family, guardian or other support person about the incident, where they are capable of making this known. When the victim and/or the offender are not capable then the line manager will notify the appropriate person of the incident **as soon as possible** and **within 12 hours** of the report being made.
- 4.5.4 The manager will facilitate access to appropriate support, where practical, for both clients, their families and staff, and ensure they have information about available services (**Appendix 4**).

---

<sup>6</sup> If the employee is a permanent officer the matter will be dealt with by the EPSU under the Procedural Guidelines (s 44) of the *Public Sector Employment and Management Act, 2002*. If the employee is a casual or temporary officer or a permanent, temporary or casual employee under the *Home Care Service Act, 1988* the process will be managed pursuant to the ADHC Policy *Guidelines for Managing Allegations of Misconduct, 2006*.

- 4.5.5 If a manager reasonably believes that an incident between two clients is abuse or assault the matter must be referred to the NSW Police.
- 4.5.6 If a staff member accompanies the offender who is a client to the police station to provide support, the staff member must not give an opinion about the offender or the alleged incident, give the offender legal advice, question the offender on behalf of the police or interpret the offender's answers. The staff member should be replaced by an independent support person or a legal adviser as soon as possible (**Appendix 4**).

#### **4.6 Financial abuse**

- 4.6.1 Staff of ADHC operated services must follow procedures described in the policies, Managing Clients' Personal Finances in ADHC Residences, updated June 2006 and Principles for the Management of Finances in Residences, Accommodation and Centre-Based Respite Services, updated June 2006, when administering clients' personal finances.
- 4.6.2 Where clients are vulnerable, and unable to manage their personal finances, this may be done informally by the family, guardian or other support person. In the absence of a suitable informal financial manager, application is made to the Guardianship Tribunal to appoint a formal financial manager.
- 4.6.3 Staff of ADHC operated services are required to comply with the Department's reporting processes (4.14 Regional reporting) if they suspect irregularities in the management of clients' personal finances.
- 4.6.4 When there is an allegation of financial abuse, the manager must notify the client, family or guardian, and/or the administrator of the client's finances. The matter may be reported to the NSW Police (see Section 3).

#### **4.7 Past incidents of abuse**

- 4.7.1 If the abuse has happened in the past, and the client is not in immediate danger, the line manager must be notified as soon as possible.
- 4.7.2 If the line manager reasonably believes that abuse has occurred, or is in any doubt, the matter must be referred to the NSW Police for further investigation.

#### **4.8 Communication**

- 4.8.1 The line manager should appoint a contact person to communicate with the victim and family, guardian or other support person to ensure that information relating to the incident is provided through one coordinated source.
- 4.8.2 Information being relayed to the victim must be provided in a form that is understandable, and this includes ensuring that a support person is available who knows the victim's communication requirements.
- 4.8.3 When the victim is unable to make decisions about any aspect of the incident, a family member or guardian must be present to make decisions on the victim's behalf. Where this relates to medical treatment or forensic

examination consent must be provided by a person responsible in accordance with the *Guardianship Act*.

#### **4.9 Support for clients**

- 4.9.1 The victim and family, guardian or other support person should be assisted to access any debriefing, counselling, legal or other support services if that is their wish.
- 4.9.2 Clients who are victims of abuse and their families or guardians should be referred to Victims Services NSW on **1800 633 063** to be advised of their rights, and the support services that are available to them (**Appendix 4**).
- 4.9.3 Managers will facilitate access for victims of violent crimes and their families who may be eligible to apply for counselling with the Approved Counselling Service provided by Victims Services NSW.
- 4.9.4 Staff must ensure that clients, both victim and offender, are adequately supported by an independent person, who could be a relative, friend, advocacy service or legal practitioner.
- 4.9.5 The victim, family, guardian or other support person will have the choice of pursuing the matter through the legal system and must be supported to access the services and advice they require. **Appendix 4** contains a list of organisations that provide legal advice and services.
- 4.9.6 Information provided to a client, guardian or other support person about legal rights, options and support services, must be provided in a format that suits their individual communication needs.

#### **4.10 Support for staff**

- 4.10.1 Staff should be offered a debriefing session within 24 hours of the incident occurring<sup>7</sup>.

#### **4.11 Privacy and confidentiality**

- 4.11.1 All staff members who are in contact with the victim or the offender will maintain confidentiality of information between the individuals who are directly involved in responding to the incident.
- 4.11.2 Confidentiality must be maintained when making a report to external agencies. Failure to do so may prejudice any subsequent investigation and cause unnecessary hurt or embarrassment to individuals.

---

<sup>7</sup> *Serious Incident EAP Support Request Form*

## 4.12 Record keeping

- 4.12.1 It is imperative that comprehensive and accurate documentation is maintained in the interests of all parties, and to ensure accountability and transparency in decision-making.
- 4.12.2 A detailed written report should be completed as soon as possible to ensure it is an accurate record of the incident. The report should include:
- the nature and extent of the incident and an Incident Reporting Category<sup>8</sup> for the CIS;
  - a description of the incident completed as soon after the event as possible and being an exact record of the events;
  - additional reports written by other witnesses or persons present at the time the incident occurred;
  - the name and contact details of all those involved, particularly in relation to decisions that are made as a result of the incident;
  - the response provided to the person making the allegation;
  - the date and signature of the person making the report;
  - ongoing actions required to resolve the matter; and
  - the outcome, although, depending on the nature of the incident an outcome may be delayed.
- 4.12.3 Records are maintained to comply with the standards published under the authority of the *State Records Act 1998* that also requires records of disciplinary proceedings in relation to employees be retained indefinitely.
- 4.12.4 Staff of ADHC Accommodation and Respite services should refer to the *Record Management Procedures for ADHC Group Homes 2006*.
- 4.12.5 Records must be stored securely and only accessed by persons with a legitimate reason for viewing any documents.

## 4.13 Managing risk

- 4.13.1 The line manager and staff must assess the risk of further incidents and update any risk management plans pertaining to the event and the clients involved.
- 4.13.2 The line manager and staff must review the *Client Risk Profile*<sup>9</sup> of any clients involved in the incident to assess and manage the risk of further incidents of abuse.

## 4.14 Regional reporting

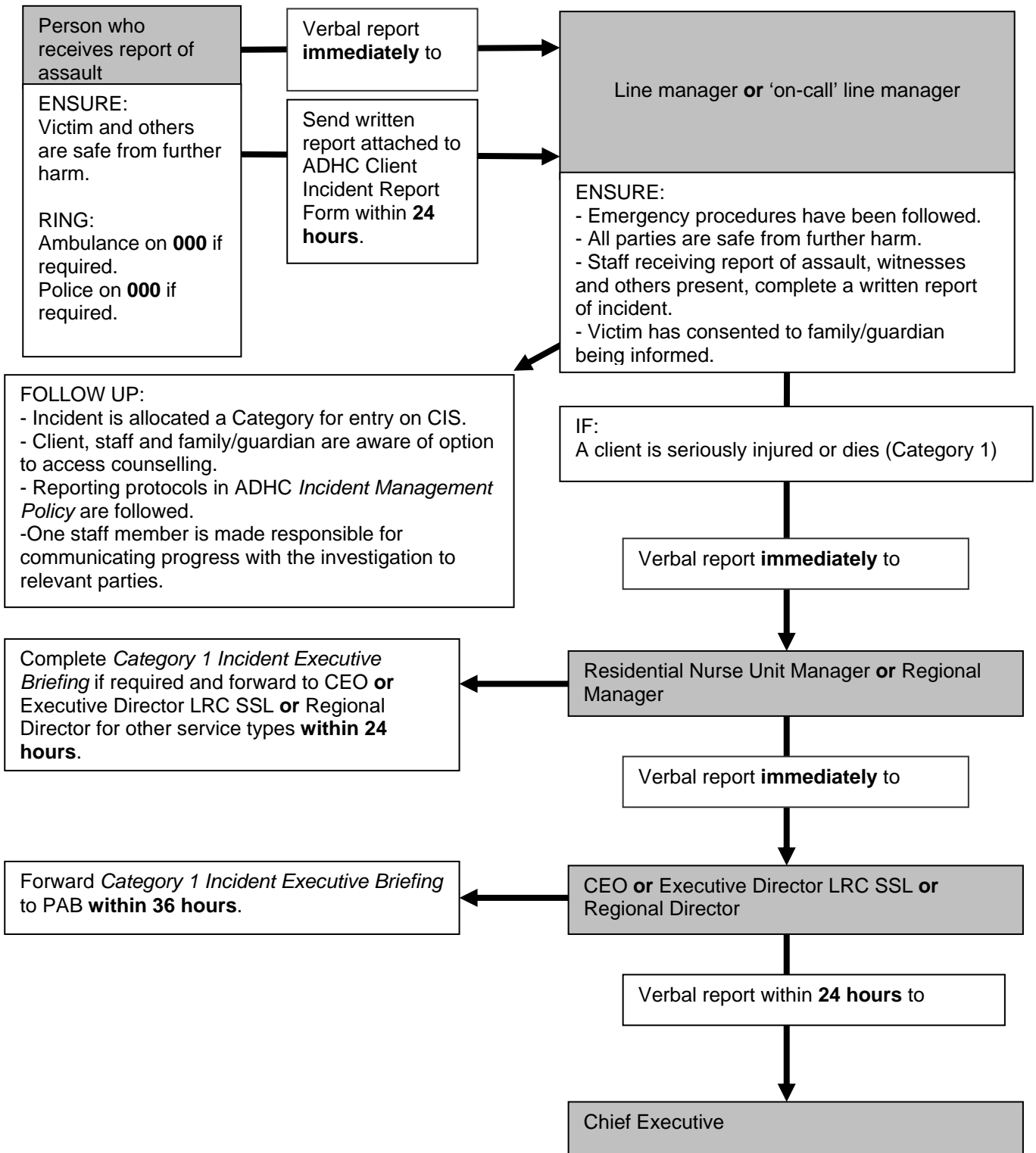
- 4.14.1 The Regional Manager will follow the incident reporting requirements of the *ADHC Incident Management Policy, 2006* (Sections 7 & 8).
- 4.14.2 A report of the death of a client should be provided in accordance with the 2004 ADHC policy *Response to the death of a client and reporting reviewable deaths*.

---

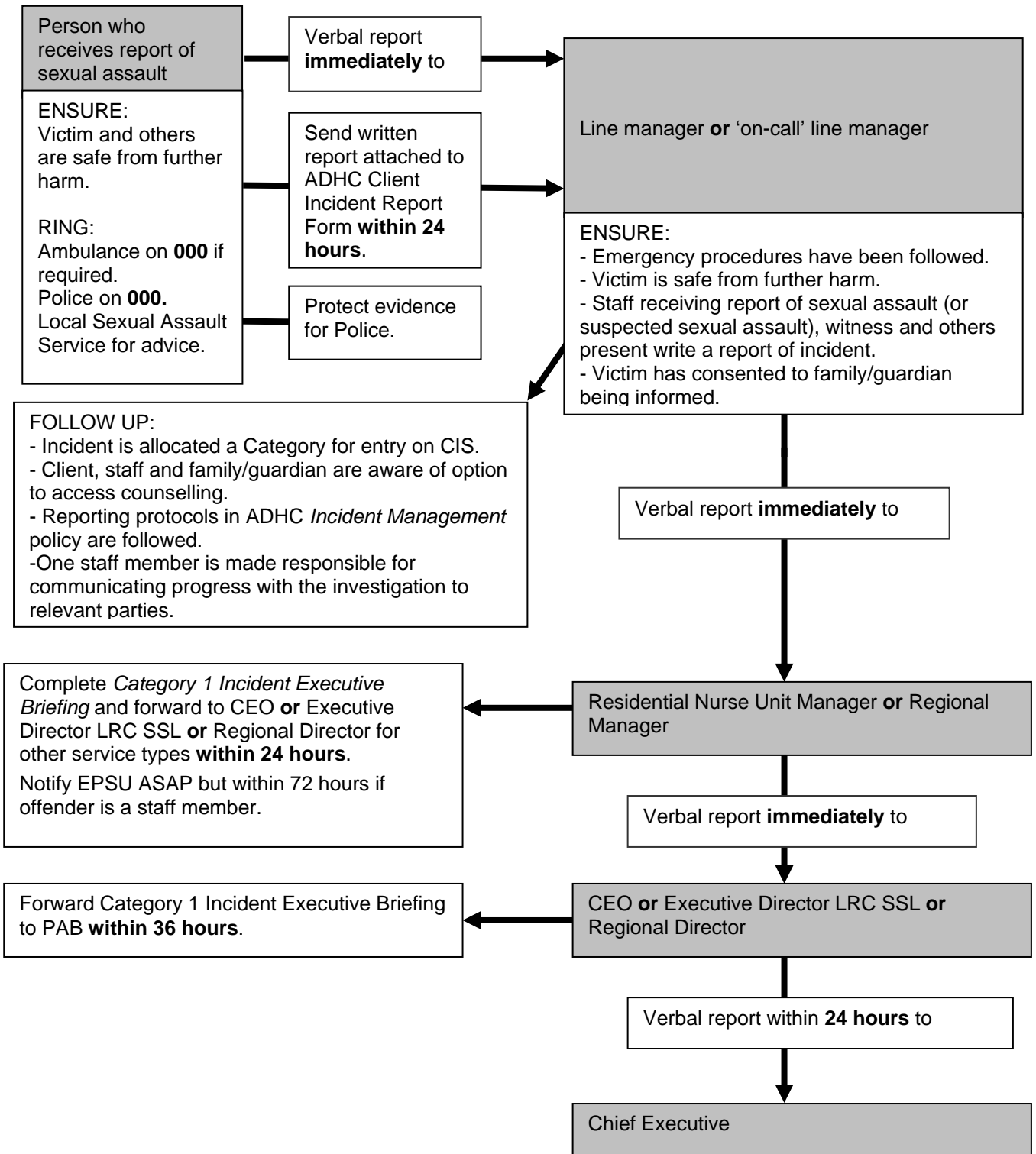
<sup>8</sup> Refer to ADHC *Incident Management Policy, 2006*, Appendix A, for a guide to Incident Reporting Categories.

<sup>9</sup> ADHC *Managing Client Risks* policy

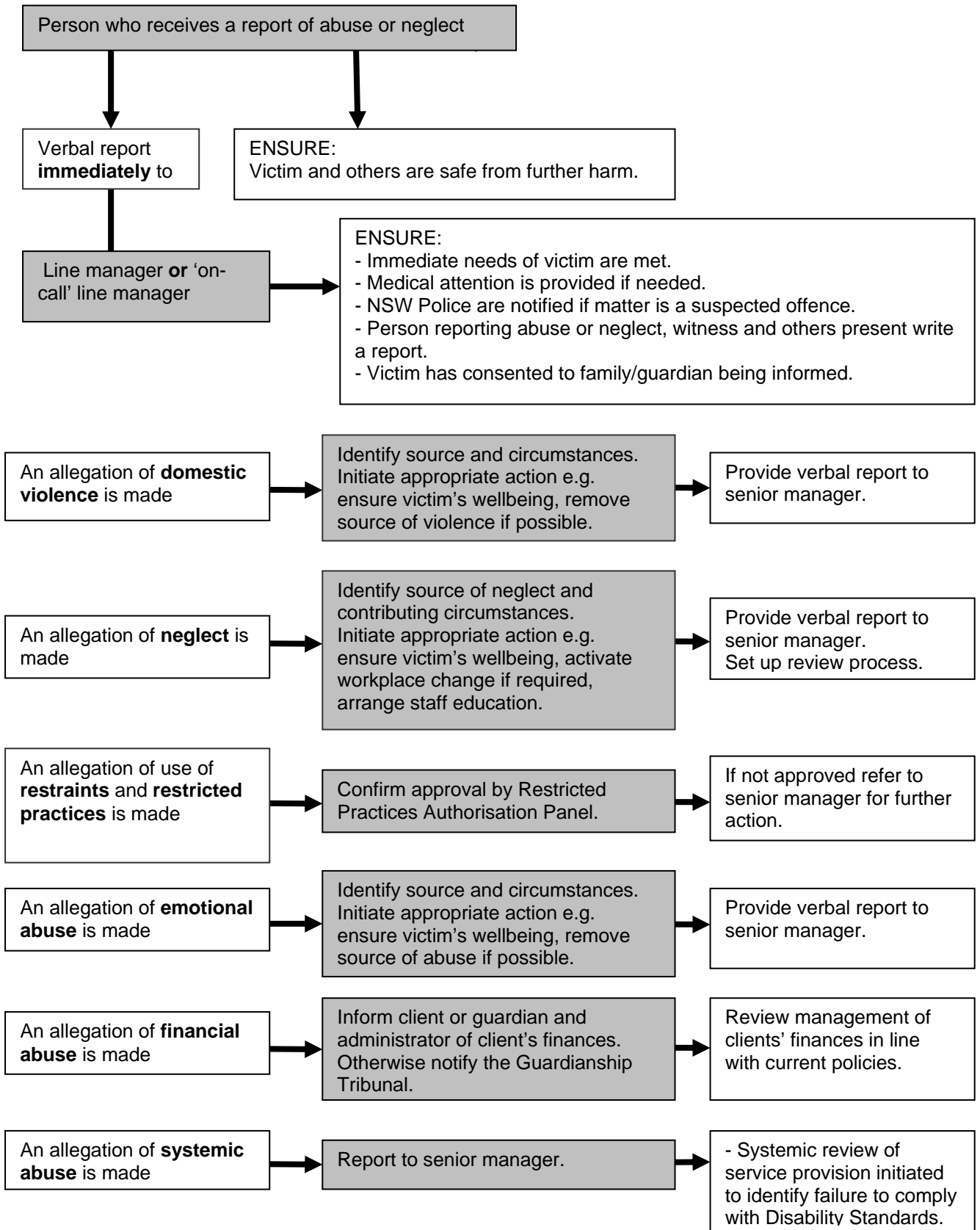
**FLOW CHART 1.** Response to **physical assault** or an allegation of physical assault towards an adult client (18yrs and over).



**FLOW CHART 2.** Response to **sexual assault** or an allegation of sexual assault towards an adult client (18yrs and over).



**FLOW CHART 3.** Response to abuse or neglect or an allegation of abuse or neglect towards an **adult** client (18yrs and over).



## 5 APPENDICES

### 5.1 PREVENTION AND EARLY INTERVENTION

Effective **prevention strategies** will include recruitment screening processes to protect clients from exposure to individuals who have a history of harming vulnerable people. By ensuring that new recruits are adequately screened services can maximise their chances of employing suitable individuals to work with people with a disability.

**Prevention strategies** that relate to good practice in recruitment and retention are summarised below.

<b>Position descriptions</b>	Avoid ambiguous statements. Include clear expectations regarding behaviour towards clients.
<b>Selection process</b>	Conduct structured interviews. Develop specific questions to explore applicants' attitudes to the abuse of clients.
<b>References</b>	Check references provided by applicants.
<b>Criminal record checks</b>	Request a check from an appropriate source. Advise applicant that a criminal record check will be made.
<b>Induction</b>	Provide a code of conduct for new staff to read and sign. Include clear statements about behaviour towards clients. Include responding to abuse in initial training sessions. Provide full briefing to agency staff about the organisation's policies on abuse before they commence work with clients.
<b>Staff training</b>	Keep staff well informed about inappropriate treatment of clients. Discuss client issues clearly and openly, for example sexuality and consent. Review code of conduct.
<b>Staff responsibilities</b>	Remind staff that any observation or suspicion of abuse must be reported to a line manager. Remind staff to respect the rights of clients, families, other staff and the organisation.
<b>Management responsibilities</b>	Manage staff performance. Provide strong leadership and examples of respect for others.

In the same way that effective recruitment screening practices aid in reducing clients' exposure to harm, the provision of orientation sessions for staff to identify the risk indicators for abuse will increase their ability to recognise the early signs of possible abuse (**Appendix 3**).

**APPENDIX 1**

Staff need to know the issues associated with abuse of people with a disability, including assault and neglect, and must be aware of current policies, procedures and legislation pertaining to abuse and individual rights.

Clients and staff should be educated to understand the rights of clients, their sexuality and human relationships, and their need to learn self-protective behaviours to the best of their abilities.

A consideration for staff could be the introduction of self-protective behaviours such as the development of 'intimate care plans' detailing the level of personal contact between a client and staff that is required for the adequate provision of care, and that is understood by the client and the staff member.

Protection of clients and prevention of harm will be enhanced by fostering an organisational culture that actively encourages and supports clients, and their families or guardians, to access complaint mechanisms and raise concerns about service delivery. This includes ensuring that all clients have the opportunity to express their needs positively and to have some control and choice in their lives.

**Intervention strategies** for staff include a range of approaches that are summarised in the following table.

<b>Awareness and identification</b>	Recognising a possible risk of abuse and referring to appropriate agencies or senior management for assessment.
<b>Risk assessment</b>	Assess the situation to determine the presence, nature and extent of abuse. If it is appropriate, involve other agents in a resolution, for example, general practitioners, social workers or community workers.
<b>Case coordination</b>	Assess and arrange appropriate services for clients who are at risk or are victims of abuse.
<b>Support services</b>	Provide health, welfare, counselling and victims support, or other appropriate services.
<b>Legal intervention</b>	Access appropriate legal services ( <b>Appendix 4</b> ).

## 5.2 TYPES OF ABUSE

### *Observed abuse*

Staff in accommodation services, or any other services used by clients, are most likely to observe incidents of abuse towards clients.

### *Reported abuse*

Abuse may be reported directly to staff by the victim or by another client who has observed the incident or multiple incidents. A disability worker or any other person, may observe the abuse of a client or clients, and report it to a responsible person.

### *Suspected abuse*

A disability worker or any other person may detect unusual behaviours or events that could be indicators of client abuse. Another carer, a family member or a guardian who knows a client well and has reason to suspect that the client is being abused should inform a responsible person among the disability workers. Any other person who is not necessarily familiar with a client but suspects that there is an abusive situation should also report any suspicion of abuse to a manager who knows or is involved in the client's circle of support.

### 5.2.1 Types of abuse

The following definitions<sup>10</sup> of abuse are taken from known sources. Abuse is not limited to the types defined below and employees are required to consider that any inappropriate behaviour towards a client may be abuse.

#### 5.2.1.1 Domestic violence

Violence, abuse and intimidation perpetrated by one person against another in a personal, intimate relationship. It is a partnership violence that includes violence perpetrated when couples are separated or divorced. Domestic violence occurs between two people where one has power over the other causing fear, physical and/or psychological harm.

*Note: This type of abuse can occur where people are living in the same house, between a client and a family member or friend, or between two clients.*

#### 5.2.1.2 Neglect

Neglect is a failure to provide the basic physical and emotional necessities of life. It can be wilful denial of medication, dental or medical care, therapeutic devices or other physical assistance to a person who requires it because of age, health or disability. It can also be a failure to provide adequate shelter, clothing, food, protection and supervision, or to place persons at undue risk through unsafe environments or practices and thereby exposing that person to risk of physical, mental or emotional harm. Neglect includes the failure to provide the nurturance or stimulation needed for the social, intellectual and emotional growth or well being of an adult or child.

---

<sup>10</sup> National Disability Abuse and Neglect Hotline: <http://www.disabilityhotline.org/abuse.html#top>; [NSW Interagency Guidelines for Child Protection Intervention, 2000](http://www.nsw.gov.au/childprotection/intervention); and Aged Rights Advocacy Service, SA: <http://www.sa.agedrights.asn.au>

## APPENDIX 2

*Note: Neglect may occur when the primary carer of a client does not provide the essential elements for life described above, or when any person or organisation responsible for providing care or services to a client fails to meet this obligation.*

**Examples**

<b>Neglect</b>	Refusing to provide service users with food because they have not done what they were asked to do
	Hurrying or rushing assistance with eating or drinking to fit in with staff timetables rather than clients' needs
	Withdrawal or denial of privileges, planned outings or personal items that are not designated and planned behaviour management strategies
	Depriving clients of their right to express their cultural identity, their sexuality or other desires
	Failure to ensure adequate food, health care support, clothing, medical aid or culturally relevant contexts and supports
	Not using a communication device to enable expression of needs or other communication

**5.2.1.3 Physical abuse**

Physical abuse is assault, non-accidental injury or physical harm to a person by any other person. It includes but is not limited to inflicting pain or any unpleasant sensation, causing harm or injuries by excessive discipline, beating or shaking, bruising, electric shock, lacerations or welts, burns, fractures or dislocation, female genital mutilation and attempted suffocation or strangulation.

*Note: This type of abuse may be perpetrated by people known to clients or by strangers, and can occur at any time or place.*

**Examples**

<b>Physical abuse</b>	Hitting, smacking, biting, kicking, pulling limbs, hair or ears
	Bending back fingers, bending an arm up behind the back
	Dragging, carrying or pushing people who do not want to be moved unless involuntary relocation is part of a behaviour management plan
	Physical restraint
	Threat of violence

**5.2.1.4 Restraints and restricted practices**

Restraining or isolating an adult for reasons other than medical necessity or in the absence of a less restrictive alternative to prevent self-harm. This may include the use of chemical or physical means or the denial of basic human rights or choices such as religious freedom, freedom of association, access to property or resources or freedom of movement. These practices are not considered to be abuse if they are applied under a restricted practice authorisation.

*Note: The ADHC Behaviour Support Policy and Practice Manual, 2009 describes the use of restricted practices and contains procedures and templates for their use. Refer to 'Position Statement and Procedures - Behaviour Intervention and Support in Applications Relating to a Person with an Intellectual Disability', Guardianship Tribunal, March 2006.*

**Examples**

<b>Restraints and restricted practices</b>	The use of social isolation (ignoring a client) when it is not a designated behaviour management strategy
	Putting a client into a room with the door locked
	Locking a client in a room all night
	Using other clients to provide physical control over a client
	Expulsion for masturbating
	Excessive chemical restraint - use of medication without proper authorisation or consent
	Forcing clients to eat food they do not want to eat

**5.2.1.5 Sexual assault**

Any sexual contact between an adult and child 16 years of age and younger, or any sexual activity with an adult who lacks the capacity to give or withhold consent, or is threatened, coerced or forced to engage in sexual behaviour. It includes non-consensual sexual contact, language or exploitative behaviour and can take the form of rape, indecent assault, sexual harassment or sexual interference in any form.

*Note: This type of abuse may be instigated by any person, against any other person of any age and of either gender.*

**Examples**

<b>Sexual assault</b>	Anal or vaginal intercourse without consent
	Fingers or object inserted into vagina or anus without consent
	Cunnilingus or fellatio without consent
	Masturbation of another person without consent
	Non-consensual touching of breasts or genitals
	Indecent exposure
	Masturbation by a person in the presence of the victim
	Voyeurism
	Displaying pornographic photography or literature
	Sexual harassment, including lewd or suggestive comments, teasing or insults with sexual connotations

**5.2.1.6 Emotional abuse**

Includes verbal assaults, threats of maltreatment, harassment, humiliation or intimidation, or failure to interact with a person or to acknowledge that person's existence. This may also include denying cultural or religious needs and preferences.

*Note: Although any person may initiate emotional abuse towards a client it is likely to come from persons who associate with clients regularly. The sources could be primary carers, family, friends, other clients or other service providers.*

**Examples**

<b>Psychological or emotional abuse</b>	Humiliating a client for losing control of their bladder or bowel or about other private matters
	Treating clients in ways that deny them their dignity
	Preventing clients from expressing themselves out of fear of retaliation
	Discouraging personalisation of rooms or clothing
	Limiting social freedom available to clients
	Denying cultural needs, such as serving pork to Jewish or Muslim clients
	Shouting orders to clients
	Using humiliating names when speaking to a client

**5.2.1.7 Financial abuse**

The improper use of another person's assets or the use or withholding of another person's resources.

*Note: Possible sources of financial abuse are carers, families or guardians who act formally or informally as financial managers and have access to or responsibility for clients' finances and property.*

**Examples**

<b>Financial abuse</b>	Denying clients' access to or control over their money when they have a demonstrated capacity to manage their own finances
	Denying a client access to information about their personal finances
	Taking a client's money or other property without their consent (which is likely to also constitute a criminal offence)
	Forced changes to wills or other legal documents
	Using a client's belongings for personal use

**5.2.1.8 Systemic abuse**

Failure to recognise, provide or attempt to provide adequate or appropriate services, including services that are appropriate to that person's age, gender, culture, needs or preferences.

*Note: Service providers and carers are the likely sources of systemic abuse.*

**Examples**

<b>Systemic abuse</b>	Relevant policies and procedures are not implemented
	Clients are denied the option to make decisions affecting their lives
	Health care and lifestyle plans are not implemented

### 5.3 RECOGNISING SIGNS THAT MAY BE INDICATORS OF ABUSE

Staff and management play an important role in protecting clients from further harm by recognising the indicators of abuse and responding to them. The presence of one or more indicators does not mean that abuse has occurred but does require staff to be vigilant on the client's behalf.

Indicators of abuse are not always obvious, and while clients or others may suspect that abuse has occurred there might not be any evidence to confirm the suspicion. Indicators are variable, and people who are familiar with clients and have a strong positive relationship with them are best placed to recognise behavioural changes that may suggest a client is being abused.

#### Indicators of abuse including assault and neglect<sup>11</sup>

Physical Indicators	Behavioural Signs
<b>Physical Abuse</b>	
Facial, head and neck bruising or injuries. Drowsiness, vomiting, fits (associated with head injuries). Unexplained or poorly explained injury. Other bruising and marks may suggest the shape of the object that caused it. Bite marks or scratches. Unexplained burns or scalds. Unexplained fractures, dislocations, sprains.	Explanation inconsistent with the injury; explanation varies. Avoidance or fearfulness of a particular person or staff member. Sleep disturbance (eg. nightmares; bed wetting). Changes in behaviour: out of character aggression; withdrawal; excessive compliance.
<b>Neglect</b>	
Hunger and weight loss. Poor hygiene. Poor hair texture. Inappropriate or inadequate clothing for climatic conditions. Inappropriate or inadequate shelter or accommodation. Unattended physical problems or medical needs. Health or dietary practices that endanger health or development. Social isolation.	Requesting, begging, scavenging or stealing food. Constant fatigue, listlessness or falling asleep. Direct or indirect disclosure. Extreme longing for company. Anxiety about being alone or abandoned. Displaying inappropriate or excessive self-comforting behaviours.

<sup>11</sup> Adapted from:

NSW Interagency Guidelines for Child Protection Intervention 2000, revised 2005;  
 Elder Abuse Manual 1996 Disability Services ASAP;  
 Detecting and Reporting Physical, Sexual or Emotional Abuse or Neglect USA 2003; and  
 Australian National Disability Abuse and Neglect Hotline.

Physical Indicators	Behavioural Signs
<b>Sexual abuse</b>	
<p>Direct or indirect disclosure. Sexual act described by client. Trauma to the breasts, buttocks, lower abdomen or thighs. Difficulty in walking or sitting. Injuries (e.g. tears or bruising), pain or itching to genitalia, anus or perineal region. Torn, stained or blood stained underwear or bedclothes. Sexually transmitted diseases. Unexplained accumulation of money or gifts. Pregnancy.</p>	<p>Repeat use of words eg “bad”, “dirty”; Self-destructive behaviour, self mutilation. Sudden changes in behaviour or temperament, eg. depression, anxiety attacks (crying, sweating, trembling), withdrawal, agitation, anger, violence, absconding, seeking comfort and security. Inappropriate advances to others. Sleep disturbances, refusing to go to bed, going to bed fully clothed. Eating disorders. Refusing to shower or constant showering. Changes in social patterns, refusing to attend usual places (work, respite). Excessive compliance.</p>
<b>Psychological or emotional abuse</b>	
<p>Speech disorders. Weight loss or gain.</p>	<p>Feelings of worthlessness about life and self; extreme low self-esteem self-abuse or self-destructive behaviour. Extreme attention seeking behaviour and other behavioural disorders (eg. disruptiveness, aggressiveness, bullying). Excessive compliance. Depression, withdrawal, crying.</p>
<b>Financial abuse</b>	
<p>Restricted access to or no control over personal funds or bank accounts. No records or incomplete records kept of expenditure and purchases. Missing money, valuables or property. Forced changes to wills or other legal documents.</p>	<p>Stealing from others. Borrowing money. Begging.</p>

## 5.4 USEFUL CONTACTS

### Legal advice and services

#### **INTELLECTUAL DISABILITY RIGHTS SERVICE (IDRS)**

**Telephone contact: 02 9318 0144 or 1800 666 611**

The IDRS provides telephone advice on a range of legal issues and representation in priority areas such as criminal law, care and protection and guardianship. IDRS also engages in policy and law reform work and undertakes community education.

#### **CRIMINAL JUSTICE SUPPORT NETWORK (CJSN)**

**Telephone contact: 1300 665 908 (24 hours)**

CJSN is a State-wide support and information service for people with an intellectual disability who are involved in criminal matters (whether they are victims, witnesses, suspects or defendants). CJSN, amongst other things, can provide support workers to assist a person with an intellectual disability at police interviews, at court and at related legal appointments.

#### **LAW ACCESS NSW**

**Telephone contact: 1300 888 529**

Law Access NSW is a website and telephone service that can assist people in finding information and other services that will assist them with their legal needs.

#### **COMMUNITY LEGAL CENTRES NSW**

**Telephone contact: 02 9212 7333**

CLC are independent organisations that provide free legal advice, information and referrals for individuals and communities in NSW, especially people on low incomes or otherwise disadvantaged in their access to justice.

#### **DISABILITY DISCRIMINATION LEGAL CENTRE (NSW)**

**Telephone contact: 02 9310 7722 or 1800 800 708**

The Centre provides free legal advice, representation and assistance for problems involving discrimination against people with disabilities and their associates. However, the Centre is not a generalist legal service for people with disabilities and only assists in cases of disability discrimination under either the Australian Government Disability Discrimination Act or the NSW Anti-Discrimination Act.

### Complaints

#### **NSW OMBUDSMAN**

**Telephone contact: 02 9286 1000 or 1800 451 524 or TTY 02 9264 8050**

The Ombudsman's Office handles complaints about a range of services and providers including public sector agencies and community services.

#### **INDIVIDUAL AND GROUP ADVOCACY SERVICE (People with Disability Australia Incorporated)**

**Telephone contact: 02 9370 3100 or 1800 422 015**

**TTY 1800 422 016**

**APPENDIX 4**

This is a free, non-legal advocacy service for individuals and groups of people with a disability who have serious and urgent problems. The service is available to people with all kinds of disability across NSW. The service also gives advice and information to people with a disability and their associates about how to advocate for themselves.

**Reporting abuse**

**AUSTRALIAN NATIONAL DISABILITY ABUSE AND NEGLECT HOTLINE**

**Telephone contact: 1800 880 052 or TTY 1800 301 130**

The National Disability Abuse and Neglect Hotline is an Australia-wide telephone hotline for reporting abuse and neglect of people with disabilities using government funded services. Allegations are referred to the appropriate authority for investigation.

**Victims' support**

**VICTIMS OF CRIME BUREAU**

**Telephone contact: 02 8688 5511 or 1800 633 063 or TTY 1800 555 677 ask for 1800 633 063**

- The Victims of Crime Bureau is a NSW Government agency that offers support to people who are victims of crime. The Victims of Crime Bureau aims to ensure that its assistance is accessible to all victims of crime, including those with disabilities.
- Victims Support Line staff provide information on the **rights** of a victim of crime as detailed in the Charter of Victims Rights.
- The Victims Support Line staff can also provide confidential emotional support, in addition to practical information on how to access other groups and services that may assist with a victim's recovery following a crime.
- Free access to the Approved **Counselling** Scheme can be arranged through the Victims of Crime Bureau by contacting:

**Victims Support Line:**

**(02) 8688 5511 or 1800 633 063 (Toll free)**

**TTY 1800 555 677 ask for 1800 633 063**

**Telephone Interpreting Service: 13 14 50**

**Callers with a speech/communication impairment:**

**1800 555 727 ask for 1800 633 063**

<http://www.lawlink.nsw.gov.au/vs>

- The service includes information to victims of violent crime about applying for **compensation**<sup>12</sup>.

<sup>12</sup> You are eligible to claim compensation if:

- you are the victim of an act of violence and are injured as a result (primary victim); or
- you are injured as a result of witnessing an act of violence (secondary victim); or
- you are the parent or guardian of a primary victim of an act of violence who was under 18 years at the time of the act and you are injured as a result of learning of the act of violence (a secondary victim); or
- you are a member of the immediate family of a homicide victim (family victim); or
- you are injured while trying to:
  - prevent someone from committing an act of violence (primary victim), or
  - arrest someone who is committing an act of violence (primary victim), or
  - help or rescue someone against whom an act of violence is being committed (primary victim).

## APPENDIX 4

**SEXUAL ASSAULT SERVICE (NSW DEPARTMENT OF HEALTH)**

Staff should contact their local Sexual Assault Service for advice if they are uncertain about reporting an incident as sexual abuse.

- 24 hours at most services or telephone the local hospital after hours.
  - Local SAS contact details are below or can be found at the following web address: <http://www1.health.nsw.gov.au/services>
- The SAS provides a range of services that can include immediate care and counselling for victims of sexual assault.
  - The SAS can advise staff about monitoring, documentation and duty of care issues in relation to any allegation of sexual assault.

Location	Address	Telephone numbers
<b>Greater Southern Area Health Service</b>		
Albury	Albury Sexual Assault Service, 596 Smollett St., Albury.	6058 1800 or 6058 4642 (AH)
Bega	Far South Coast Sexual Assault Service, Bega Community Health Centre, McKee Drive, Bega.	6492 4416
Goulburn	Goulburn Sexual Assault Service, Goulburn Community Health Centre, Cnr Goldsmith and Faithful Sts., Goulburn.	4827 3913 or 4827 3111 (AH)
Cooma	Sexual Assault Service, Cooma Community Health Centre, cnr Bombala & Victoria Sts., Cooma.	6452 1324 or 6452 1333 (AH)
Deniliquin	Deniliquin Community Health Centre 2 Macauley St., Deniliquin	5882 2900
Moruya	Eurobodalla Sexual Assault Service, Moruya Community Health Centre, River St., Moruya.	4474 1561 or 6492 4416 (AH)
Narooma	Narooma Community Health Services Cnr Field & Graham Sts., Narooma	4476 2344
Queanbeyan	Queanbeyan Community Health Centre, Antill St., Queanbeyan.	6298 9233
Wagga	Wagga Sexual Assault Service, Wagga Community Health Centre, Docker St., Wagga Wagga.	6938 6411 or 6938 6666 (AH)
Young	Young District Sexual Assault Service, Allanan St., Young.	6382 1522 or 6382 1222 (AH)
<b>Greater Western Area Health Service</b>		
Bourke	Bourke Sexual Assault Service, Bourke Community Health Centre, Tarcoon St., Bourke.	6870 8899 or 6870 8888 (AH)

---

(Reference: Victims Services NSW website).

**APPENDIX 4**

Broken Hill	Broken Hill Sexual Assault Service, Broken Hill Community Health Centre, Kincumber House, Morgan St., Broken Hill.	08 8080 1523 or 8080 1333 (AH)
Bathurst	Mid Western Sexual Assault Service, Bathurst Community Health Centre, William St., Bathurst.	6331 5533 or 6339 5281 (AH)
Coonabarabran	Coonabarabran Community Health Service, Cassilis St., Coonabarabran.	6842 6404 or 6885 8632 (AH)
Cowra	Cowra Hospital, Liverpool St., Cowra	6340 2356
Dubbo	Dubbo Sexual Assault Service, Dubbo Community Health Centre, 2 Palmer St., Dubbo.	6885 8999 or 6885 8632 (AH)
Lightning Ridge	Lightning Ridge Community Health Services, cnr Pandora & Opal Sts., Lightning Ridge	6829 1022 or 6885 8632 (AH)
Lithgow	Lithgow Community Health Service, Colldrewe Drive, Lithgow	6350 2750
Mudgee	Mudgee Sexual Assault Service, Mudgee Community Health Centre, Crn Church & Meares Sts., Mudgee.	6372 6455
Nyngan	Nyngan Sexual Assault Service, Nyngan Community Health Centre, Pangee St., Nyngan.	6832 1255 or 6885 8632 (AH)
Orange	Orange Sexual Assault Service, 129 Sale St., Orange	6393 3300 or 6393 3000 (AH)
Parkes	Parkes Community Health Centre, Coleman Rd., Parkes.	6862 1866 or 6861 1200 (AH)
Walgett	Walgett Sexual Assault Service, Walgett District Hospital & Health Service, 141 Fox St., Walgett.	6828 1066 or 6885 8632 (AH)
<b>Hunter &amp; New England Area Health Service</b>		
Armidale	Armidale Sexual Assault Service, Armidale Community Health Centre, Rusden St., Armidale.	6776 9600 or 6776 9655 (AH)
Glen Innes	Glen Innes Sexual Assault Service, Glen Innes Community Health Centre, Macquarie St., Glen Innes.	6739 0100 or 6739 0200 (AH)
Gunnedah	Gunnedah Sexual Assault Service, Gunnedah Community Health Centre, Marquis St. Gunnedah.	6742 0666 (AH)
Inverell	Inverell Health Service, Swanbrook Rd., Inverell	6721 9600 or 6728 8300 (AH)
Lower Hunter	Lower Hunter Sexual Assault Service, 58 Stonach Ave., East Maitland.	4933 4422 or 4921 3888 (AH)
Moree	Moree Sexual Assault Service, Moree Community Health Centre, Alice St., Moree.	6757 0249 or 6757 0031 (AH)

**APPENDIX 4**

Narrabri	Narrabri Sexual Assault Service, Narrabri Community Health Centre, 11 Cameron St., Narrabri.	6792 1522 or 6792 1666 (AH)
Newcastle	Newcastle Sexual Assault Service, Longworth Ave., Wallsend.	4924 6333 or 4921 3888 (AH)
Quirindi	Quirindi Sexual Assault Service, Quirindi Health Service, Nowland St., Quirindi.	6746 1466
Tamworth	Tamworth Sexual Assault Service, Tamworth Community Health Centre, 180 Peel St., Tamworth.	6767 8100 or 6767 7700 (AH)
Upper Hunter	Upper Hunter Sexual Assault Service, Brentwood St., Muswellbrook.	6542 2062 or 1800 642 357
<b>North Coast Area Health Service</b>		
Bellingen	Bellingen Community Health Centre, Church St., Bellingen.	6655 1266
Bulahdelah	Bulahdelah Community Health Service, Richmond St., Bulahdelah.	4997 4240
Coffs Harbour	Coffs Harbour Sexual Assault Service, 345 Pacific Highway, Coffs Harbour.	6656 7200
Dorrigo	Dorrigo Multi-Purpose Service, Beech St., Dorrigo.	6657 2066
Forster	Forster Community Health Centre, Breese Pde., Forster.	6555 6822
Gloucester	Gloucester Community Health Centre, Church St., Gloucester.	6558 1011
Hawks Nest	Hawks Nest/ Tea Gardens Community Health Centre, Bommer St., Hawks Nest.	4997 0186
Kempsey	Kempsey Sexual Assault Service, Polwood St., Kempsey.	6562 6066 or 6562 6155 (AH)
Laurieton	Camden Haven Community Health Centre, Laurie St., Laurieton.	6559 9003
Lismore	Richmond Sexual Assault Service, Lismore Base Hospital, cnr Laurel & Weaver Sts., Lismore.	6620 2970
Macksville	Macksville Community Health Centre, Boundary St., Macksville.	6568 2677
Port Macquarie	Port Macquarie Sexual Assault Service, Morton St., Port Macquarie.	6588 2882 or 6581 2000 (AH)
Taree	Biripi Aboriginal Corporation Medical Centre, Pacific Highway, Taree.	6552 2154
Taree	Taree Sexual Assault Service, York St., Taree.	6592 9638 or 6592 9906 (AH)
Tweed Valley	Tweed Valley Sexual Assault Service, Powell St., Tweed Heads.	5506 7540 or 5506 7510 (AH)
Woolgoolga	Woolgoolga Community Health Centre, Beach St., Woolgoolga.	6654 1111
<b>Northern Sydney &amp; Central Coast Area Health Service</b>		
Gosford	Gosford/Wyong Sexual Assault Service, Biala Cottage, Holden St., Gosford.	4320 3175 or 4320 2111 (AH)

**APPENDIX 4**

Wyong	Sexual Assault Service, Wyong Hospital, Pacific Highway, Kanwal.	4320 3175 or 4320 2111 (AH)
St Leonards	Child Health Services, RNS Hospital, Pacific Hwy., St Leonards.	9926 6060 or 9926 7111 (AH)
St Leonards	Sexual Assault Centre (16 yrs and over), Royal North Shore Hospital, Pacific Highway, St Leonards.	9926 7580 or 9926 7111 (AH)
<b>South Eastern Sydney &amp; Illawarra Area Health Service</b>		
Nowra	Nowra Sexual Assault Service, Shoalhaven Hospital, Scenic Drive, Nowra.	4423 9211
Kogarah	Sexual Assault Centre, St George Hospital, Gray St., Kogarah.	9350 2494
Randwick	Child Health Services, POW Hospital, High St., Randwick.	9382 1412 or 9382 1111 (AH)
Wollongong	Wollongong Sexual Assault Service, Urunga House, 4 Urunga Pde., Wollongong	4222 5408 or 4222 5000 (AH)
<b>Sydney South West Area Health Service</b>		
Bankstown	Bankstown Sexual Assault Service, Bankstown Community Health Centre, 36-38 Raymond St., Bankstown.	9780 2833
Blacktown	Blacktown/ Mt Druitt Sexual Assault Service, Marcel Crescent, Blacktown.	9881 8700
Camperdown	Sexual Assault Centre (16 yrs and over) Royal Prince Alfred Hospital, L5 King George V Hospital, Missenden Road, Camperdown.	9515 9040 or 9515 6111 (AH)
Liverpool	Liverpool/Fairfield Sexual Assault Service, Liverpool Community & Allied Health, cnr Goulburn & Campbell Sts., Liverpool.	9828 4844 or 9828 3000 (AH)
Campbelltown	Macarthur Sexual Assault Service, Ingleburn Community Health Centre, cnr Moore & Cordeaux Sts., Campbelltown.	4629 2111 or 9828 3000 (AH)
Bowral	Wingecarribee Sexual Assault Service, Community Health Centre, Bendooley St., Bowral.	4861 8000 or 9828 3000 (AH)
<b>Sydney West Area Health Service</b>		
Penrith	Sexual assault service, Nepean Hospital, Parker St., Penrith.	4734 2000
Westmead	Sexual Assault Services (16 yrs and over), Grevillea Cottage, Westmead Hospital, Westmead.	9845 7940 or 9845 5555 (AH)
Westmead children	Level 6 Child Protection Unit/Sexual Assault Services, The Children's Hospital at Westmead, Hawkesbury Road, Westmead.	9845 2434 or 9845 0000 (AH)

## 5.5 POTENTIAL SOURCES OF ABUSE

The research literature suggests that abuse of women with disabilities occurs in similar situations to all women, that is, they are most likely to be assaulted by someone they know, it is most likely to be a man, and will occur in a familiar and private place. The literature also indicates that women and men with disabilities are physically abused more often than the general population<sup>13</sup>.

<b>Direct care staff</b>	Have the greatest opportunity because they have extended periods of one to one contact with clients, are the providers of many of the necessities of life and assist them with intimate activities such as bathing and hygiene. They can also act as guardians and decision makers in some aspects of clients' lives. They may also have access to clients' money.
<b>Other staff</b>	Have regular opportunities for unsupervised contact with clients and their property. They may also have access to clients' money.
<b>Other clients</b>	Are in regular and close contact with clients and may have diminished responsibility related to their own disability.
<b>Visitors</b>	Have opportunities to spend time with individual clients and build up relationships based on trust that can later be violated.
<b>Family members</b>	Can spend extended periods of time with clients, away from staff and other clients, and they may have unlimited access to finances and property.
<b>Guardians, financial managers or trustees</b>	Are in a position to make lifestyle and health related decisions about clients and can approve the use of clients' finances.
<b>Other service providers</b>	May have regular contact with clients away from carers and family and are in positions of trust.
<b>Strangers</b>	At any time when clients are unsupervised or away from their usual environment they can be at risk of abuse from strangers.

<sup>13</sup> In *Violence against women with disabilities – An overview of the literature*, Keran Howe, 2000. Women With Disabilities Australia (WWDA).